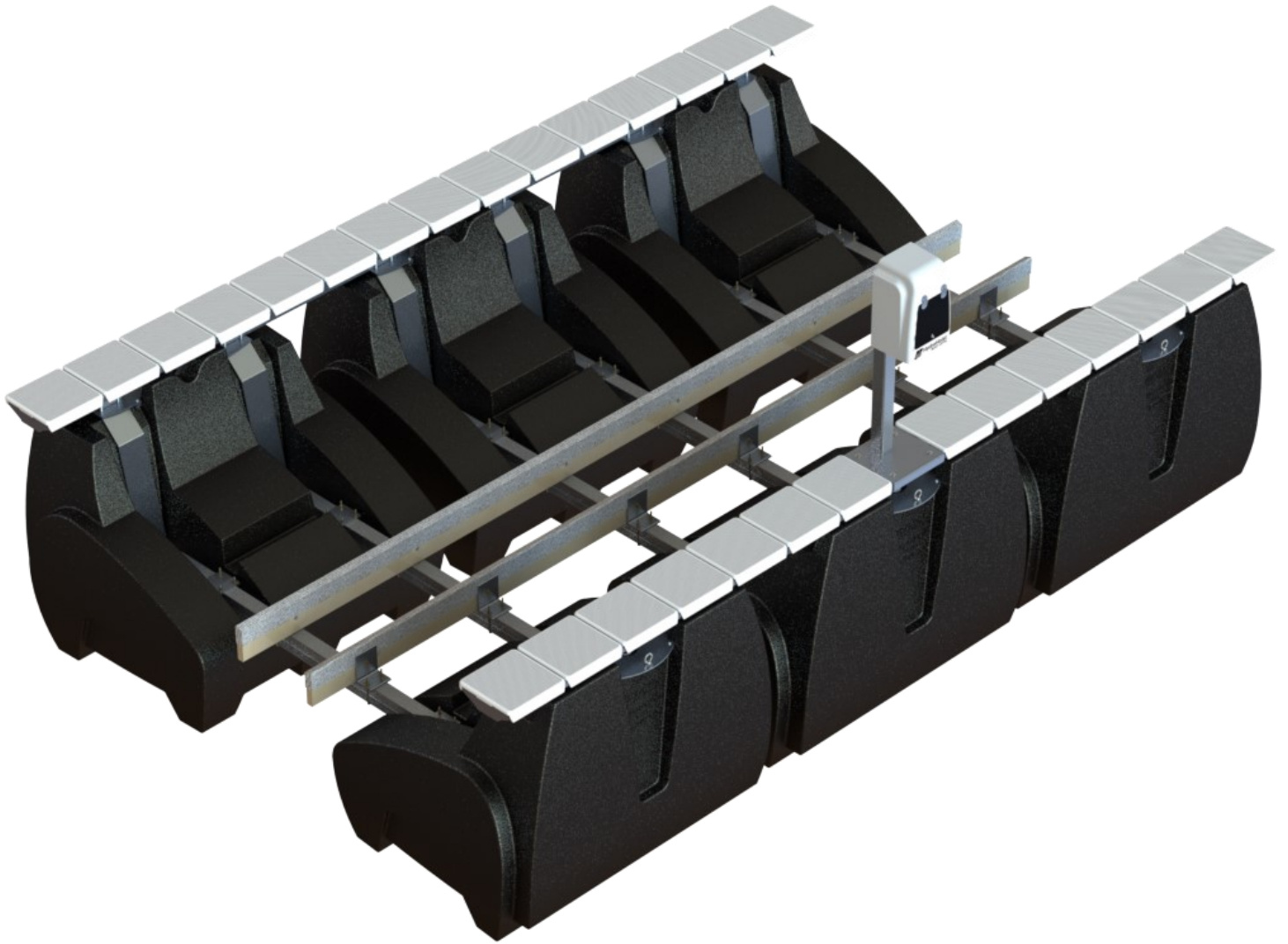


HarborHoist™

BY HYDROHOIST BOATLIFTS



OWNER'S MANUAL

US PATENT # 6,422,167 B1

REVISED: June 21st 2018

800.825.3379

BOATLIFT.COM

Thank You

We would like to a moment to thank you for purchasing a HarborHoist™ G1.5 lift. We believe our lifts are the easiest to use on the market today and know that your new lift will give you many years of trouble free service. The following pages will provide you the necessary information for maintaining your new lift, as well as instructions on its use. Your new HarborHoist™ G1.5 lift is the result of extensive research, design and development in environments where corrosion, marine growth, and severe weather encourage lifting boats out of the water to help protect your investment. As the leader in the industry, the HarborHoist™ G1.5 lift offers features provided exclusively by HydroHoist® Marine Group.



WARNING: Do not operate lift without the initial control setup. Damage to your lift or boat can result from NOT programming controller properly. Consult certified installer or factory for initial set-up

CONTROLLER FUNCTIONALITY

UP=Raises lift

DOWN=Lowers lift

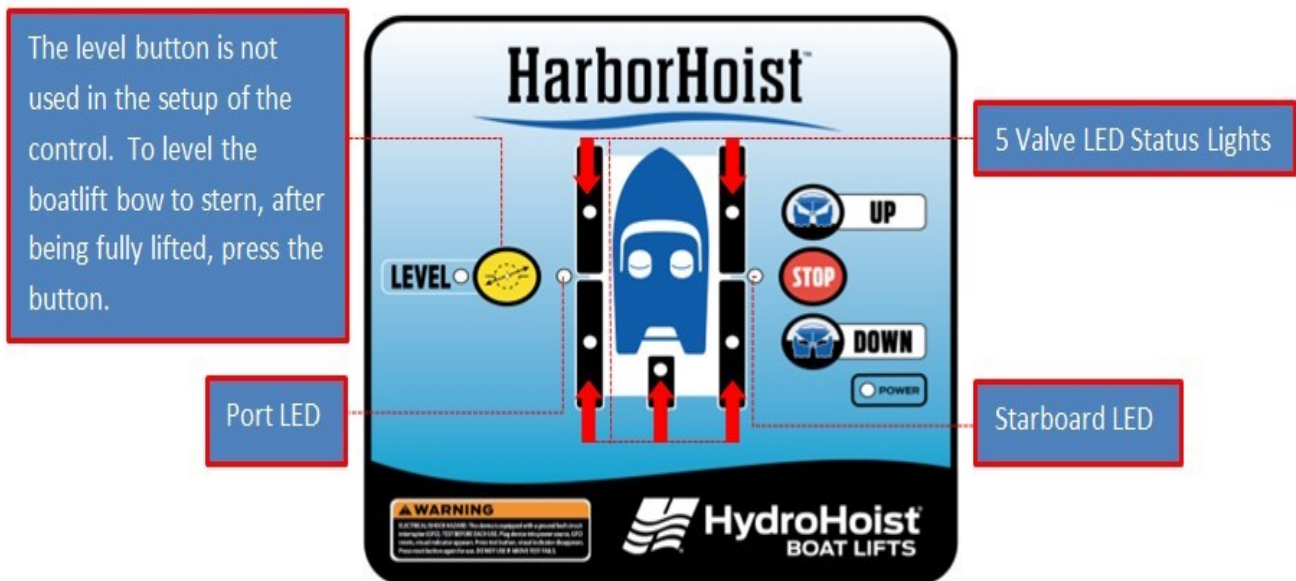
STOP=Stops all controller functions

LEVEL=Levels the lift within ± 0.5 degrees after lift is up

UP + DOWN= Holding for 5 seconds sets zero-level reference point

LEVEL + DOWN= Holding for 5 seconds opens all valves to release all air in tanks. **Not recommended to preform this operation with boat on lift!**

LEVEL + UP= Holding for 5 seconds opens all valves and turns on blower. Used to quickly raise lift in water. **DO NOT perform with boat on lift!**



INITIAL CONTROL SET-UP

MUST BE PERFORMED PRIOR TO LIFT OPERATION AND/OR ATTEMPTING TO LOAD A BOAT:

The Harbor Hoist controller is sold in two configurations, with either an internal or external leveling sensor. This depends on the size of lift and dock configuration.

Each have an unique setup processes if you do not know which you have please contact your installer or Harbor Hoist customer service support.

Internal Level Sensor Setup:

STEP 1: Determine the control position of the boat: **Starboard** or **Port**

A: While facing the control if the front of the boat is to the right, it is **Starboard**.

B: While facing the control if the front of the boat is to the left, it is **Port**.

STEP 2: Program the control in relation to boat placement

A: For a **Starboard** control placement: press **STOP** and **UP** at the same time until the **Starboard** LED lights.

For a **Port** control placement: press **STOP** and **DOWN** at the same time until the **Port** LED lights.

B: When the corresponding LED light (starboard/port) remains on, the control is set.

C: **PRECAUTIONARY NOTE:** If the valves actuate (open), press **STOP** and begin again.

STEP 3: Program the control level

A: Press the **UP** button; this will raise the lift to its highest point.

B: Each tank must be bubbling from the relief hole before hitting **STOP**.

If a tank does not bubble out hit **STOP** and zero the control.

-To zero the control, push and hold the **UP** and **DOWN** buttons at the same time until the 5 valve LED's flash.

-Press **UP**, and allow additional time for all tanks to bubble from the relief holes; only then press **STOP**.

-To zero the control, push and hold the **UP** and **DOWN** buttons at the same time until the 5 valve LED's flash.

C: Your lift is now set and ready to use.

External Level Sensor Setup:

Step 1: Before raising the lift for the first time, the zero-level reference point must be programmed. This reference point will remain in permanent memory until reset by user.

Step 2: Remove all air from tanks and see if lift is level or the distance from water to the top of walkway is equal on all corners of lift. If not level, move an adjustable weight to high side of lift to make level. (Approximately 40 pounds might be needed to level lift.)

Step 3: When the lift is level and the HarborHoist Controllers **POWER** light is flashing press **UP** and **DOWN** at the same time and hold for 5 seconds. After 5 seconds, the **PORT** and **STARBOARD** light will flash and the zero-level reference is set.

NOTE: If your level sensor ever loses communication with the controller the middle PORT and STARBOARD LED's will flash together rapidly. Contract your local dealer or Harbor Hoist customer service support for assistance.

General Operation

Familiarize yourself with the Control Box. We have created a simple to use 4 **BUTTON** user interface, consisting of a **UP**, **STOP**, **DOWN**, and **LEVEL** buttons. These are the basic functions for the operating the HarborHoist™ G1.5 lift. Internal to the Control are state of the art valve controls and circuitry that will insure that your lift comes up level each and every time you lift your boat from the water.

Lowering the Lift:

- Make sure the Power LED is illuminated and flashing
- Press the **DOWN** button. This will open the valves.
- Allow the lift to submerge (Walkways will remain above water)
- Untie lift safety lines from boat
- Everyone may board the boat after the boat clears the lift

Raising the Lift:

- Float boat into established pick up position on lift
- Tie off safety lines to the boat
- Everyone must exit the boat before lifting.
- Press **UP** button
- Once the lift is fully raised, air bubbles will be visible exiting from all tanks.
- Press **STOP** on Control

Leveling the Lift:

In the raise function the controller will keep the lift within ± 2 degrees for speed of operation. If the lift needs to be leveled once all the way up, press the yellow **LEVEL** button and the lift will automatically level the lift. The controller will release air out of the appropriate tank(s) to level the lift within ± 0.5 degrees.

Beyond Level Limits Lockout:

In the instance where the lift would get out of level by ± 10 degrees or greater, which could occur over time do to a burping reaction or if the air system springs a leak, the controller will lock itself out and not allow any additional functionality. The CENTER PORT and STARBOARD LED's on the controller will flash back and forth. To **UNLOCK CONTROLLER**:

- Press **STOP** button to clear lockout error
- Press **LEVEL** and **DOWN** buttons together and hold for 5 seconds. All PORT and STARBOARD LED's will turn on indicating all air valves are open allowing the lift to submerge. When the lift is completely submerged you can then re-lift the vessel by pressing the **UP** button

If this issue persists have the air system inspected for leaks.

Safety Tips

- Test GFCI on a monthly basis

To test:

- Plug in cord to power source
- Observe Light is on
- Push “test” observe light is off
- Press “reset” and verify light is on



- Keep GFCI and plug out of water
- Keep Children away
- Do not overload the lift.
- Do not allow yourself to be distracted or walk away from the lift during operation.
- Make sure bilge pump is set for automatic.

NOTE: Significant water accumulation in the bilge may overload the lift.

- Make sure any ballast tanks are empty before lifting the boat.
- Lift is not designed for lifting people.
- No persons should be under the boat while it is in the suspended position.
- Weight must be distributed equally side to side and bow to stern before lifting, Otherwise the boat will not center properly and appear to be crooked on the lift.

Preventative Maintenance

- Because of the harsh environments in which the HarborHoist™ G1.5 can be installed, it is very important to inspect your HarborHoist™ occasionally to ensure it is at peak performance. On a monthly basis inspect the following:
- GFI trips and resets properly when the TEST and RESET buttons are pressed.
- All air hoses are firmly attached and there are no apparent leaks present.
- All the aluminum components are structurally sound and no heavy corrosion is visible.
- The wood hull pads are structurally sound with no severe cracking.
- All mounting / attachment brackets are secure.
- If rope mooring is used, inspect the ropes for any issues that may compromise the integrity.
- Most importantly, run your blower fan at least once a month even during the off season. Press **UP** button on the control and let it run about a minute to help keep the motor contacts and brushes clean.

800.825.3379

boatlift.com

915 West Blue Starr Drive

Claremore, OK 74017